

**About Camp Barnes and this renovation underwritten
by the Fenwick Island Lions Club**

Camp Barnes, founded in 1947, is located in Frankford, DE and is run by the Delaware State Police as a 501(C)3 non-profit organization—Camp Barnes, Inc. Each summer the camp offers six one-week camping experiences, free of charge, for children ages 10-13 who are residents of the state of Delaware. Similarly, when not being used for these programs, the camp is provided to other non-profit organizations, including 4H, Delaware Special Olympics, Wilmington Parks and Recreation, the Delaware Burn Camp, Boy Scouts of America, and the Stockley Center, to name just a few. **Clearly, this is a “jewel” of Sussex County and a true asset to our entire state.**



For more information on Camp Barnes see their website:
<http://www.campbarnes.net/About.html>

The Fenwick Island Lions Club has previously provided financial support to the camp to help meet their needs. Last summer, the club inquired as to the camp’s most pressing need and Cpl. Shawn Hattfield, the individual in charge of Camp Barnes, without hesitation replied, “the rest rooms and bath house facilities.”

The camp was first started in the late forty’s and the rest room facilities appear to be some 50 to 60 years old. Shawn indicates that “band aids have been applied over the years to keep things running and not leaking too badly.”

Given the importance of Camp Barnes, not only to our own community, but to the entire state—and literally the generations of children who have built memories there--the Fenwick Island Lions Club decided to make a difference, in a very big way.

Last July an architect was hired, Moonlight Architecture, Inc., of Lewes, Delaware, as well as Laurence G. Claggett, Jr. a Mechanical/Plumbing/Electrical Engineer from Georgetown, Delaware. They were engaged to produce a detailed set of plans for the required and desired renovations, bringing the facility up to today’s standards and to comply with the American Disabilities Act requirements. In November 2014, the project was put out to bid and in late December Anchor Enterprises, Inc. of Georgetown, DE was selected as the general contractor.

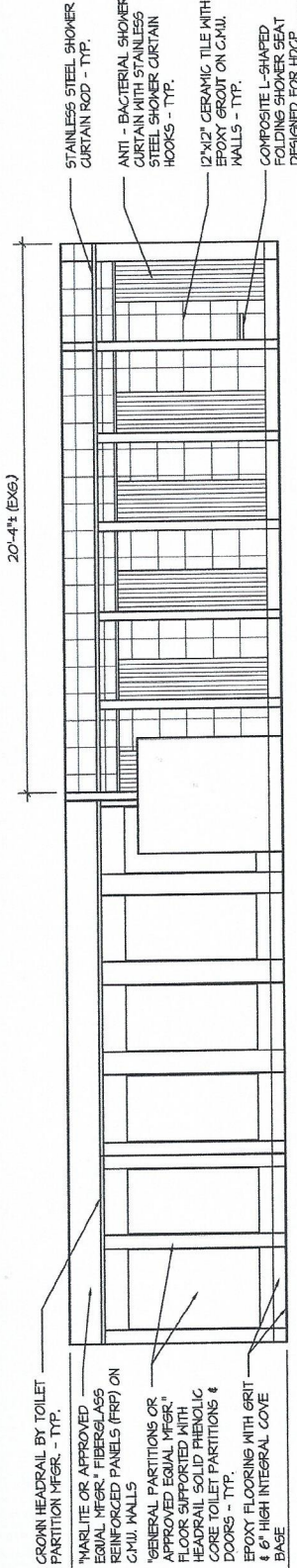
The following attachments, taken directly from the architectural drawings—which is the basis of the contract, will provide you with an idea of the scale and scope of this project:

Attachment A- the floor plan detail.

Attachment B- the Interior elevation details.

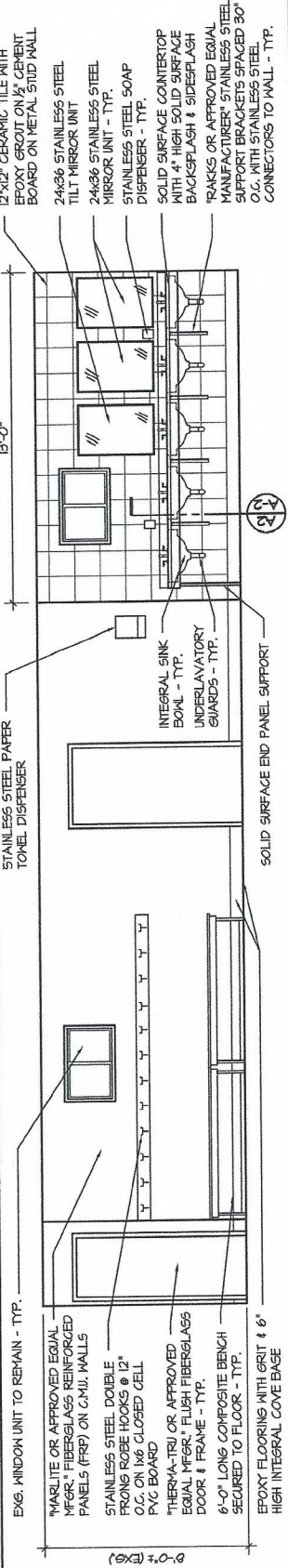
Attachment C- the plumbing fixture schedule detail.

The Fenwick Island Lions Club has underwritten virtually the entire project... And, with the blessing of Camp Barnes, Inc., the club has actively participated in the entire process, including the contract management, oversight and supervision. All work is to be completed by mid-May 2015, in time for the traditional opening of the camp.



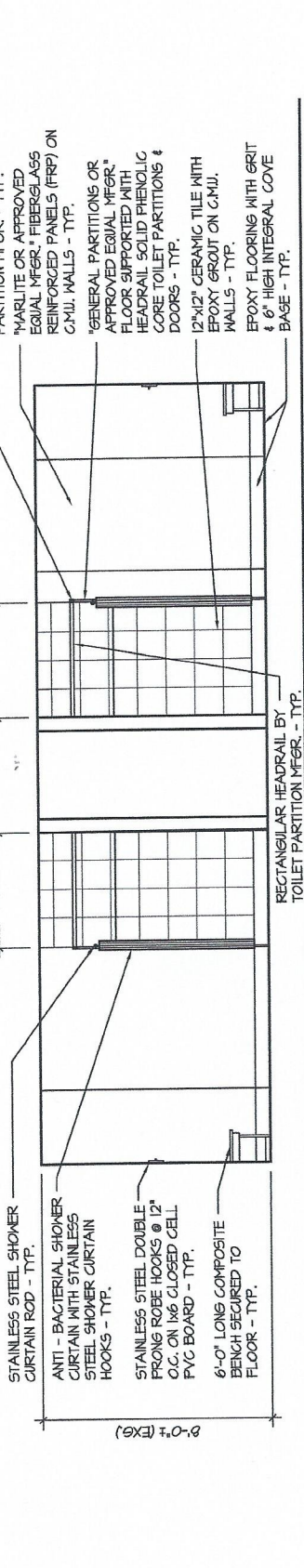
A2 INTERIOR ELEVATION

1/4" = 1'-0" KEY



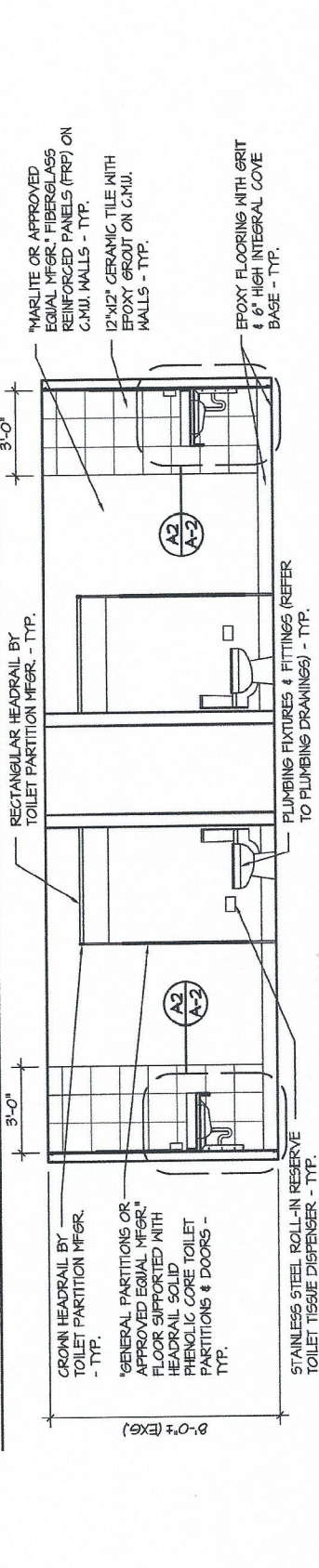
A1 INTERIOR ELEVATION

1/4" = 1'-0" KEY



B2 INTERIOR ELEVATION

1/4" = 1'-0" KEY



PLUMBING FIXTURE SCHEDULE

MARK	FIXTURE DESCRIPTION	MOUNTING HEIGHT	-MIN CONNECTIONS (IN.)-			MANUFACTURER; FIXTURE OR EQUAL	TRIM/ACCESSORIES/CONTROLS
			CW	HW	WASTE		
WC-1	WATER CLOSET 1.6 GPF, FLOOR MOUNTED, ELONGATED, FLUSHOMETER VALVE, LOW CONSUMPTION TOILET	-	1-1/4	-	3	AMERICAN STANDARD MADERA 3451.001	SLOAN: 8111 OPTIMA PLUS FLUSHOMETER. CHURCH: 9500C ELONGATED OPEN FRONT SEAT.
WC-1A	WATER CLOSET HANDICAPPED ACCESSIBLE ADA, 1.6 GPF, FLOOR MOUNTED, ELONGATED, FLUSHOMETER VALVE, LOW CONSUMPTION TOILET	-	1-1/4	-	3	AMERICAN STANDARD MADERA 3461.001	SLOAN: 8111 OPTIMA PLUS FLUSHOMETER. CHURCH: 9500C ELONGATED OPEN FRONT SEAT.
L-1	LAVATORY HANDICAPPED ACCESSIBLE INTEGRAL COUNTERTOP LAVATORY, LEVER HANDLE FAUCET, ADA COMPLIANT	-	1/2	1/2	1-1/4	-	AMERICAN STANDARD: HERITAGE 5402.142H TWO-HANDLE CENTERSET FAUCET WITH LEVER HANDLES.
SH-1	SHOWER SHOWER ONLY TRIM KIT WITH SINGLE HANDLE MIXING VALVE	-	1/2	1/2	EX	AMERICAN STANDARD COLONY T372.240	R110SS PRESSURE BALANCE VALVE WITH SCREWDRIIVER STOPS, SHOWER ONLY TRIM KIT, 1.5 GPM SHOWER HEAD, EX TRENCH DRAIN
SH-1A	SHOWER HANDICAPPED SHOWER SYSTEM KIT WITH HAND HELD SHOWER AND DRAIN, ADA COMPLIANT	-	1/2	1/2	2	AMERICAN STANDARD FLOWISE 1662.213	SHOWER SYSTEM KIT WITH SHOWER VALVE, 1.5 FLOWISE SHOWER HEAD, HAND-HELD SHOWER, IN-LINE VACUUM BREAKER, WALL SUPPLY, DIVERTER, SLIDE BAR,FLEXIBLE HOSE & SHOWER DRAIN
MS-1	MOP SINK	-	1/2	1/2	3	FIAT MSB2424	830-AA SERVICE FAUCET. 832-AA HOSE AND HOSE BRACKET. MSG2424 S/S WALL GUARDS.
FD-1	SHOWER FLOOR AT 1/2" BFF DRAIN SLOPE FLOOR TO DRAIN	-	-	-	AS NOTED	ZURN ZN415B	TYPE B, 5" NICKLE BRONZE STRAINER, VANDAL PROOF SECURED TOP.
FD-2	AREA FLOOR AT 1/2" BFF DRAIN SLOPE FLOOR TO DRAIN	-	-	-	AS NOTED	ZURN ZN415B	TYPE B, 7" NICKLE BRONZE STRAINER, NO TRAP, VANDAL PROOF SECURED TOP. DRAIN SHALL NOT BE TRAPPED.
CO	FLOOR CLEAN OUT FLUSH WITH FINISHED FLOOR	-	-	-	AS NOTED	ZURN Z1400	SCORIATED NICKLE BRONZE COVER
GCO	GRADE CLEAN OUT FLUSH WITH FINISHED GRADE	-	-	-	-	ZURN Z1403-G	CAST IRON BODY WITH COUNTERSUNK PLUG